



## PerfectMembrane® for decks

### Waterproofing Membrane and Surface Prep Primer

**What is PerfectMembrane®?** Our Polytex Fabric® set into our PerfectPrimer® makes this all-purpose, surface prep and waterproofing membrane for use over any substrate.

**Where is it used?** Over any deck surface, including wood, concrete, VCT tile, metal, mastics, or roofing materials, etc.

**PerfectMembrane®** is specified for use with modified cements, epoxies and all resin-based coatings.

#### What are the benefits of PerfectMembrane®?

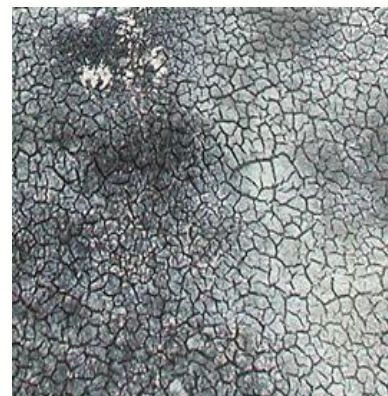
**Waterproofs:** Any deck, terrace, roof balcony etc.

**Primes:** Bonds deck to decorative coatings and overlay cements.

**Isolates Cracks:** Reduce cracking in top coatings by up to 95%.

**Encapsulates:** Asbestos and lead hidden in existing substrate.

**Reinforces weak substrates:** To 3,000 lb. Psi tensile strength.



Deck Before



Application



Ready for Coatings



PerfectMembrane  
with green tint

Bonds concrete, wood, tile, mastic or asphalt surfaces, to epoxies, acrylics, urethanes, or polymer cements.

Virtually Height-less and weight-less.  
Use indoors and out. Non-Toxic.  
Cleans up with water.

Replaces the need for tar paper, wire mesh, epoxy flood coats, and EPDM.  
Tints to many colors.

**PerfectMembrane®, the underlay membrane for overlay's and coatings.**